

General Specifications:

Total Fixture Output: 6.5 klm

Light Engine Output: 15 klm

Efficacy: 15 Lumen/Watt

Lens Option: N/A

Zoomrange: 12-36°

CRI: 80+

CQS: 85+

TM-30 Rf: 80+

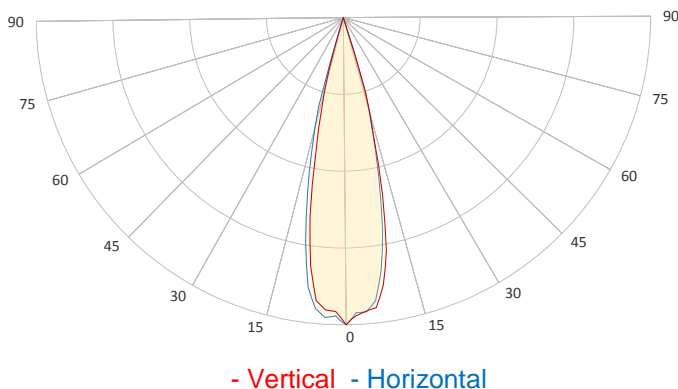
TM-30 Rg: 105+

TLCI: 80+

Color Temperature: 6500 K



Measurement



Catalog Number: 90250005HU

Measured Output: 6455 lm

Measured Peak: 40699 cd

Consumed Power: 430 W

Efficacy: 15.0 Lumen/Watt

Beam Angle (50%): 25°

Field Angle (10%): 34.3°

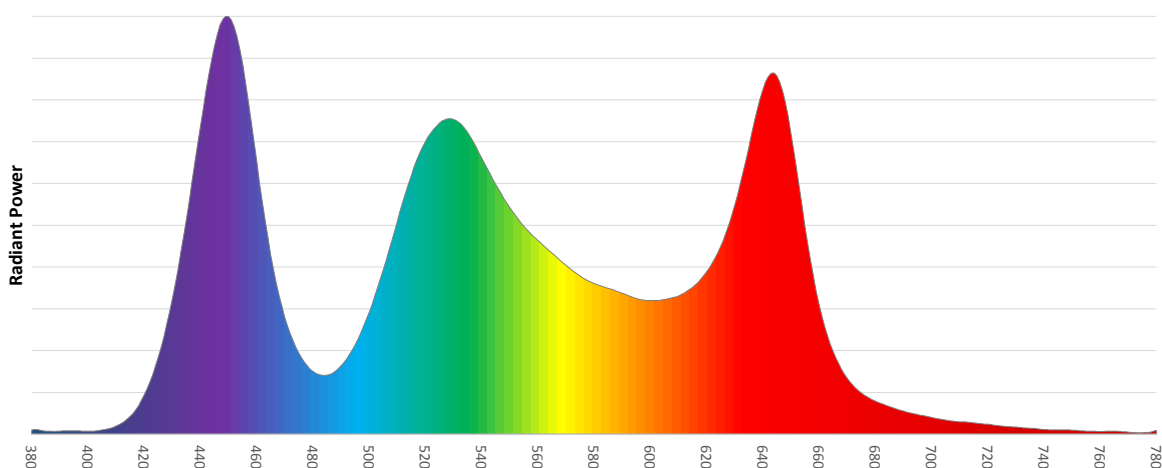
Cutoff Angle (3%): 35.6°

Measurement Condition:

Ambient Temperature: 25 +/- 5C

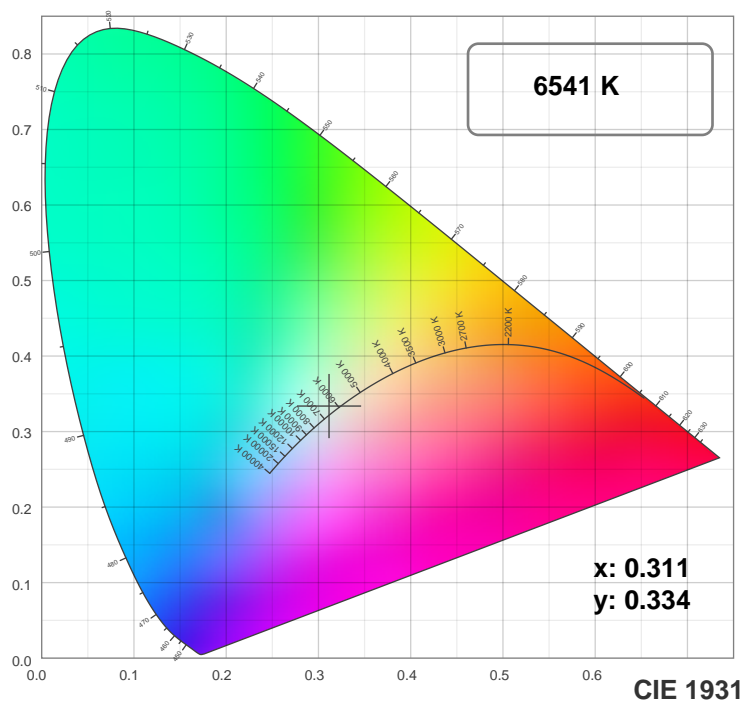
AC Supply: 230V/50Hz

Spectral distribution

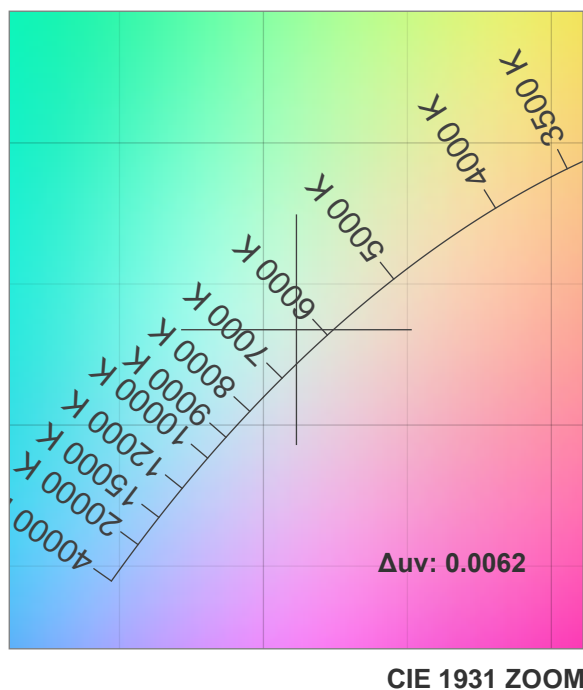
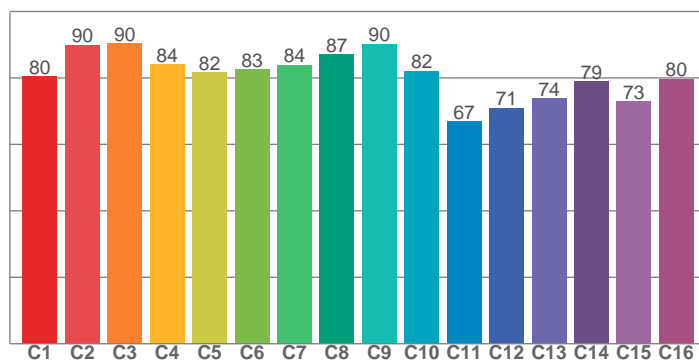


Chromaticity

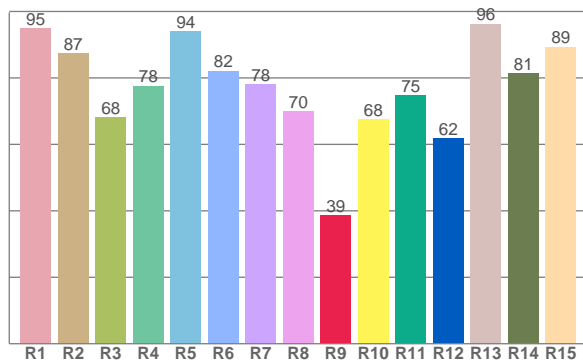
MAC Allure Profile – Wide



TM30: 81.5



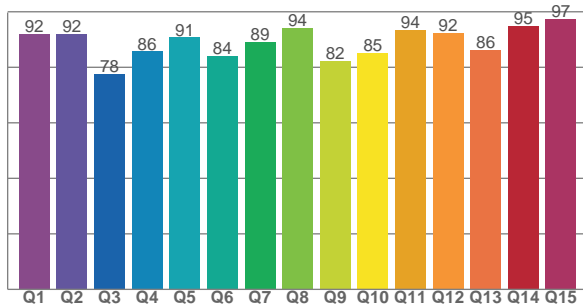
CRI: 81.5 (R1-R8)



Color Parameters

Color Temperature	Color Rendering Index	Red Component	Color Fidelity	Color Gamut
CCT	CRI	CRI R9	TM30 Rf	TM30 Rg
6541 K	81.5	38.7	81.5	108.6

CQS: 87.9



Television Lighting Consistency Index	Color Quality Scale	Color Coordinate CIE 1931	Color Coordinate CIE 1931	Color Coordinate CIE 1964	Color Coordinate CIE 1964	Color Diviation from Black Body
TLCI	CQS	x	y	u	v	Δuv
80+	87.9	0.311	0.334	0.195	0.314	0.0062

TM30 MAC Allure Profile – Wide

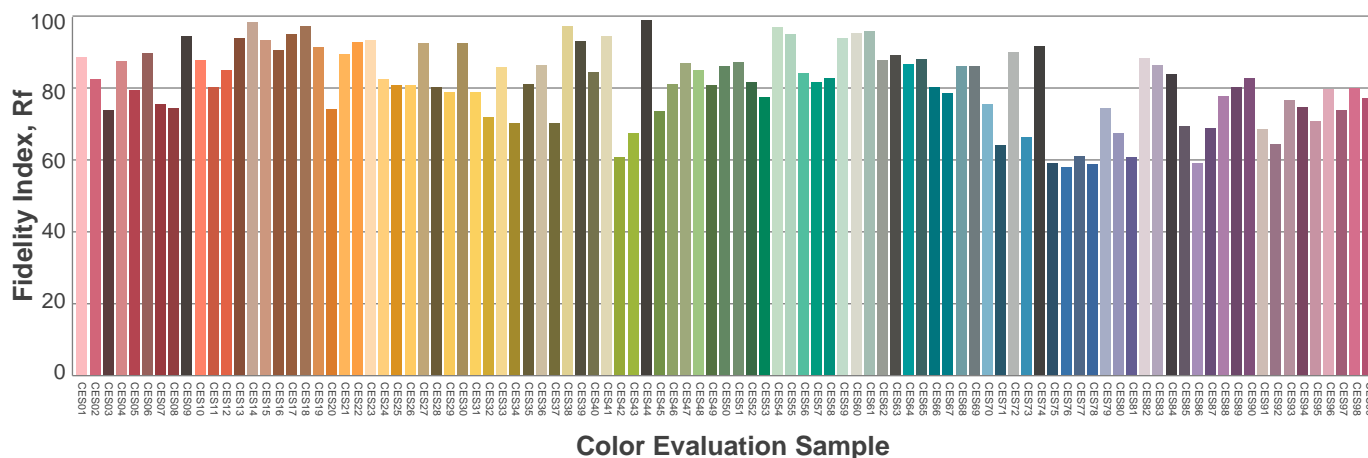
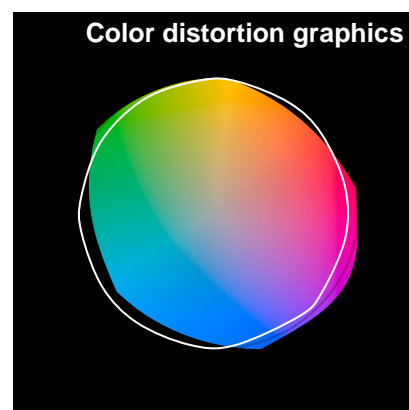
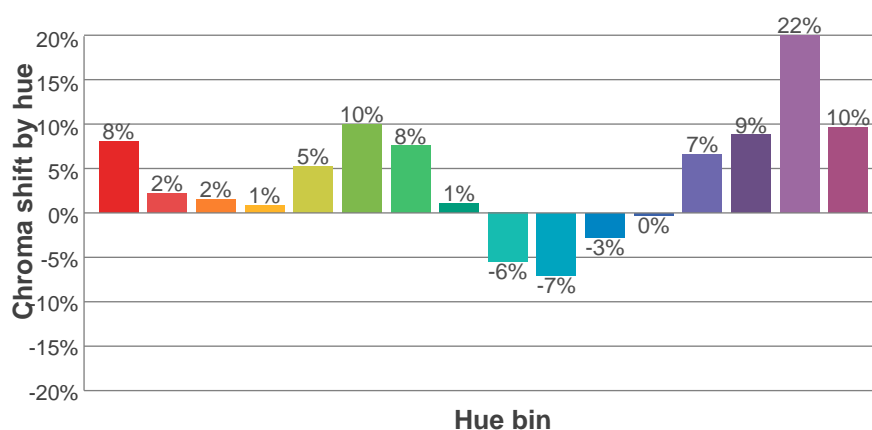
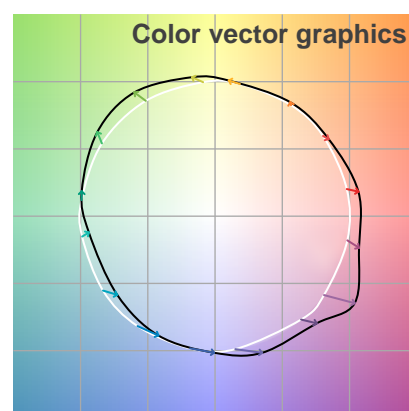
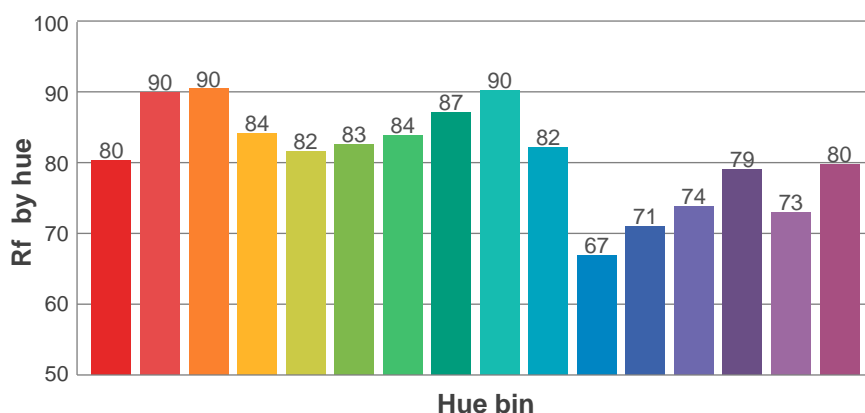
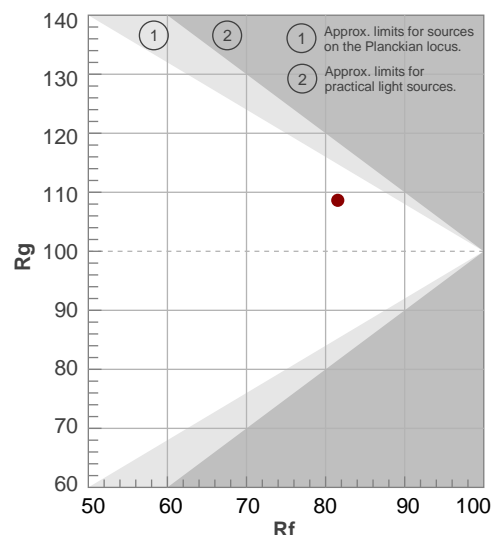
Rf 81.5

Fidelity index Rf

Rg 108.6

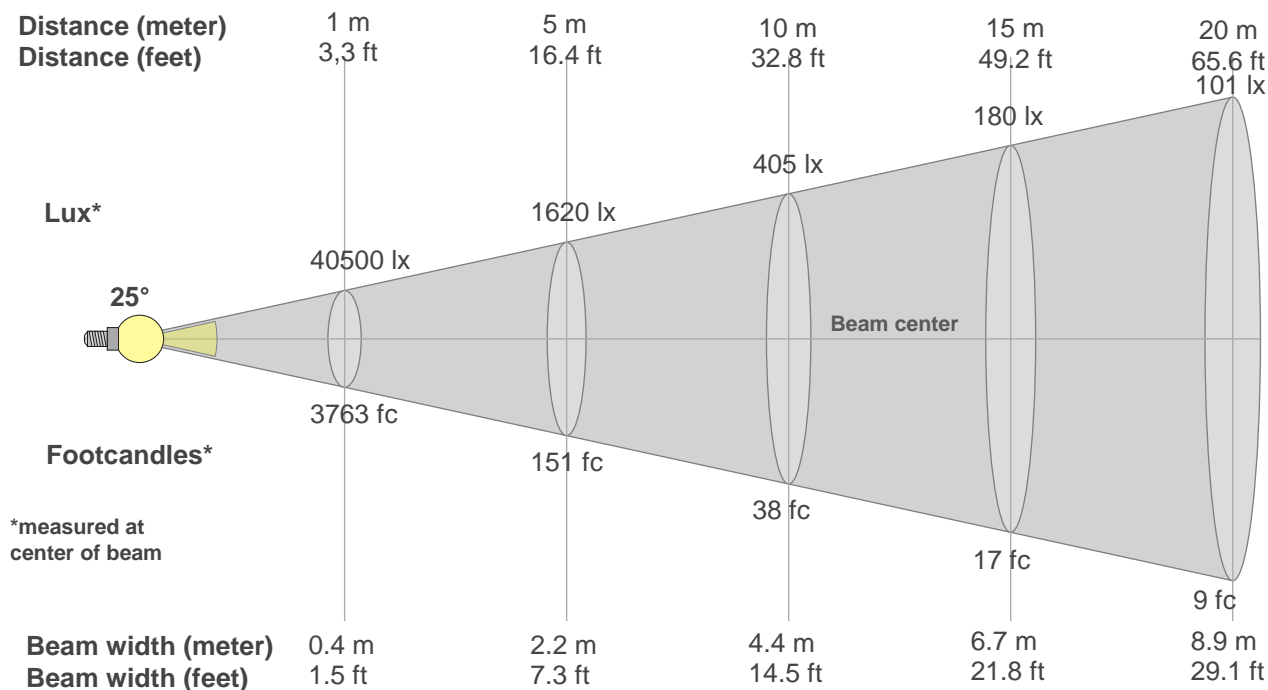
Gamut index Rg

Hue Bin	R _f	Graphic shifts (%)	
		Chroma	Hue
1	80	8%	-4%
2	90	2%	-4%
3	90	2%	2%
4	84	1%	9%
5	82	5%	7%
6	83	10%	4%
7	84	8%	-5%
8	87	1%	-6%
9	90	-6%	-2%
10	82	-7%	9%
11	67	-3%	17%
12	71	0%	18%
13	74	7%	19%
14	79	9%	8%
15	73	22%	8%
16	80	10%	-4%



Beam Details

MAC Allure Profile – Wide



Beam width:

Beam luminous intensity formula:

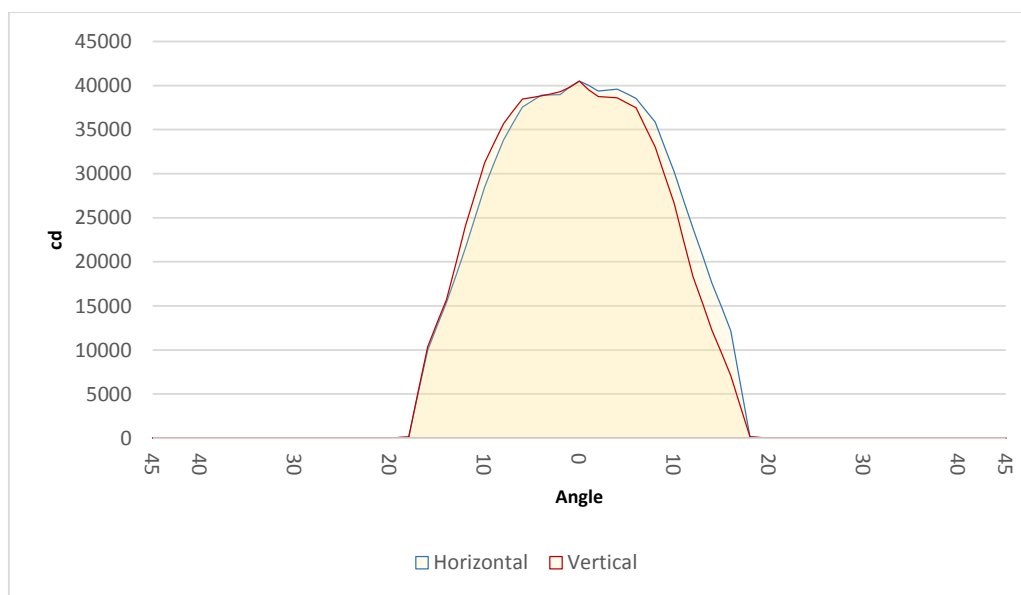
$$w = 0.4 * \text{distance}$$

$$\text{lux} = 40500 / (\text{distance}^2) \text{ (where distance is in meters)}$$

$$\text{fc} = 40500 / (\text{distance}^2) \text{ (where distance is in feet)}$$

Beam illuminance from 1-20m

1m	2m	3m	4m	5m	6m	7m	8m	9m	10m	11m	12m	13m	14m	15m	16m	17m	18m	19m	20m
3.3ft	6.6ft	9.8ft	13.1ft	16.4ft	19.7ft	23ft	26.2ft	29.5ft	32.8ft	36.1ft	39.4ft	42.7ft	45.9ft	49.2ft	52.5ft	55.8ft	59.1ft	62.3ft	65.6ft
40500lx	10125lx	4500lx	2531lx	1620lx	1125lx	827lx	633lx	500lx	405lx	335lx	281lx	240lx	207lx	180lx	158lx	140lx	125lx	112lx	101lx
3762.6fc	940.6fc	418.1fc	235.2fc	150.5fc	104.5fc	76.8fc	58.8fc	46.5fc	37.6fc	31.1fc	26.1fc	22.3fc	19.2fc	16.7fc	14.7fc	13fc	11.6fc	10.4fc	9.4fc



Beam angle 50%	Field angle 10%	Cutoff angle 3%
25°	34.3°	35.6°